

Monthly Weather Summary in Thailand June 2022

June 2022, the moderate to rather active southwest monsoon prevailed over Andaman Sea, Thailand and the Gulf of Thailand throughout the month. In addition, the low pressure cell covered upper Vietnam, the south of China and the Gulf of Tonkin throughout the month coupled with the monsoon trough that lay across Myanmar and upper Laos had shifted to lie over Myanmar and upper northern part of Thailand toward the mentioned low pressure cell during the middle of the month. Moreover, the occasionally prevailing of southerly and southeasterly winds covered lower northeastern, lower central and eastern parts. These conditions caused abundant rainfall in Thailand almost the month but amount and distribution of rain was uneven. Dry spell occurred in some areas of Uttaradit, Tak, Ubon Ratchathani, Prachuap Khiri Khan and Chumphon provinces causing below normal rainfall almost the regions and the average total rainfall over Thailand in June was 23% below normal. However during the middle and last months, abundant rainfall with flash flooding were reported in some places of northern and northeastern parts. Monthly rainfall was lower than normal in almost parts i.e. northern part 44.6 mm (29%), northeastern part 55.8 mm (29%), eastern part 86.3 mm (33%), southern part (east coast) part 22.2 mm (19%) and southern part (west coast) 49.8 mm (15%) except for central part was higher than normal 5.1 mm (3%).

1 - 10 June : The southwest monsoon which prevailed over the Andaman Sea, Thailand and the Gulf of Thailand was moderate almost the period. In addition, the low pressure cell covered upper Vietnam, the south of China and the Gulf of Tonkin throughout the period coupled with the monsoon trough shifted to lie across Myanmar and upper Laos toward the mentioned low pressure cell during the first half of the period. These cause scattered to fairly widespread rain over upper Thailand with heavy to very heavy rainfall mainly during the first half of the period. The maximum daily rainfall was 130.5 mm at Laem Ngob in Trat province on June 3. Gusty wind occurred at Khon Khen province on June 2, at Kamphaeng Phet, Nong Bua Lam Phu and Si Saket provinces on June 3, at Uthai Thani province on June 4, at Amnat Charoen province on June 7, at Uthai Thani province on June 9 and at Surin province on June 10. In southern part, rainfall throughout the period mainly along west coast that received fairly widespread rain with heavy to very heavy rainfall in some areas. The maximum daily rainfall was 142.3 mm at Thung Wa in Satun province on June 1.

11 - 20 June : The southwest monsoon which prevailed over the Andaman Sea, Thailand and the Gulf of Thailand throughout the period. In addition, the monsoon trough lay across Myanmar and upper Laos during early period then it moved downward to lie across Myanmar and upper northern part of Thailand during the middle of the period toward the low pressure cell which over upper Vietnam and the Gulf of Tonkin throughout the period. Moreover, the southerly and southeasterly winds prevailed over lower northeastern, lower central and eastern parts during the middle of the period. These caused remaining rainfall in northern and northeastern parts mainly during the middle of the period that received scattered to fairly widespread rain whereas isolated to scattered rain was found in central and eastern parts almost the period. The highest daily rainfall in upper Thailand was 146.0 mm at Agrometeorological Station in Roi Et on June 13. Gusty wind occurred at Lampang, Nan, Sukhothai, Surin, Kamphaeng Phet, Uttaradit, Phayao, Khon Khen, Udon Thani, Nong Bua Lam Phu, Chaiyaphum, Amnat Charoen, Roi Et, Mahasarakham, Nakhon Ratchasima, Buriram, Chainat and Chonburi provinces during the middle and last periods and flash flooding was reported at Nan province on June 15. Isolated to scattered rain in southern part especially along west coast that obtained fairly widespread rain on June 11, 15, 19 and 20. The highest daily rainfall was 96.7 mm at

Bang Bo Rubber Research Station, Takua Pa in Phang Nga province on June 20 and Gusty wind occurred at Surat Thani province on June 14.

21 - 30 June : Under the influence of the southwest monsoon prevailed over the Andaman Sea, Thailand and the Gulf of Thailand throughout the period and the low pressure covered upper Vietnam almost the period. In addition, the southerly and southeasterly winds prevailed over lower northeastern, lower central and eastern parts during the middle of the period. These caused isolated to scattered rain over upper Thailand almost the period except for eastern part that obtained scattered to fairly widespread rain during the beginning and middle of the periods. The highest daily rainfall was 137.6 mm at Pua in Nan province on June 30. Gusty wind occurred at Chaiphum and Surin provinces on June 14, at Phayao, Nan and Nakhon Ratchasima provinces on June 25, flood was reported at Chonburi on June 21, Chiang Rai and Phayao provinces on June 30, at Mae Hong Son province on June 29, 30 and land slide at Chiang Mai province on June 30. In southern part, abundant rainfall throughout the period especially along west coast that received fairly widespread rain with heavy to very heavy rainfall in some places. The highest daily rainfall was 150.6 mm at Kapoe in Ranong on June 30. Gusty wind occurred at Nakhon Si Thammarat province on June 20 with land slide at Yala province on June 28 and 30.

Note : Rainfall, temperatures and natural disasters in this report were updated up to July 6, 2022

Climatological Center
Meteorological Development Division
Meteorological Department

Monthly Current Report
Rainfall and Accumulative Rainfall
June 2022

Northern Thailand

Station	Temperature (°c)		Rainfall (mm)		Accumulative rainfall (mm) Since 1 January	
	Mean	Above or below normal	Actual	Above or below normal	Actual	Above or below normal
Chiang Rai	28.3	0.8	200.3	14.1	705.2	136.2
Mae Hong Son	27.9	0.0	207.7	27.6	520.6	76.3
Phayao	28.6	0.7	104.5	4.1	732.1	314.2
Chiang Mai	29.0	1.0	81.2	-37.0	781.5	400.2
Tha Wang Pha	27.8	0.4	151.7	-103.6	801.4	83.3
Nan	29.4	0.7	110.5	-24.3	604.1	139.3
Lamphun	29.3	0.8	27.4	-95.6	507.3	136.1
Lampang	29.0	0.4	79.8	-39.9	424.5	7.5
Mae Sariang	27.0	-0.1	99.3	-87.6	516.1	96.8
Phrae	29.0	0.5	39.9	-102.0	479.5	26.8
Uttaradit	29.8	0.6	69.1	-129.6	479.7	-48.2
Bhumibol Dam	29.7	1.0	18.4	-90.3	398.7	-11.3
Tak	29.5	0.7	22.2	-94.2	537.2	157.3
Mae Sot	27.4	0.6	130.0	-116.8	638.5	166.9
Umphang	25.5	0.2	204.7	16.7	774.6	231.9
Phitsanulok	29.2	-0.1	79.2	-81.9	552.4	114.0
Lom Sak	28.9	0.4	79.2	-48.5	258.1	-131.6
Phetchabun	29.3	0.6	87.2	-54.0	358.7	-103.5
Wichian Buri	29.2	-0.1	163.0	11.3	714.8	252.2
Kamphaeng Phet	28.6	-0.1	219.1	61.9	869.1	406.1
Over the area	28.6	0.4	108.7	-44.6 -29%	582.7	132.8 30%

Northeastern Thailand

Station	Temperature (°c)		Rainfall (mm)		Accumulative rainfall (mm) Since 1 January	
	Mean	Above or below normal	Actual	Above or below normal	Actual	Above or below normal
Nong Khai	29.2	0.6	164.5	-88.2	923.2	281.8
Loei	28.4	0.3	101.6	-62.4	503.3	-5.3
Udon Thani	29.1	0.3	124.7	-93.8	482.4	-75.2
Nakhon Phanom	28.7	0.6	223.8	-173.2	679.9	-168.7
Sakon Nakhon	28.9	0.5	196.2	-65.9	580.5	-96.2
Mukdahan	29.7	1.0	71.8	-133.0	450.2	-88.8
Khon Kaen	29.3	0.5	201.6	55.9	569.8	113.2
Kosum Phisai	30.0	0.7	151.9	-3.1	610.8	114.9
Roi Et	29.7	0.6	266.2	76.5	737.2	225.6
Chaiyaphum	29.3	0.5	79.1	-54.1	402.1	-34.9
Ubon Ratchathani	29.8	1.1	46.0	-190.9	643.2	57.7
Tha Tum	29.1	-0.1	91.4	-90.0	321.6	-173.9
Surin	29.5	0.9	200.6	6.5	873.6	343.5
Nakhon Ratchasima	29.6	0.3	83.7	-36.3	507.7	88.9
Chok Chai	29.4	0.5	55.2	-55.7	403.4	10.9
Nang Rong	28.8	0.1	141.8	14.4	792.2	337.4
Over the area	29.3	0.5	137.5	-55.8 -29%	592.6	58.2 11%

- NOTES :
- 1) Mean temperature is the average of daily dry-bulb temperature
 - 2) "T" is trace, rainfall amount less than 0.1 mm.
 - 3) "blank" is incomplete data.
 - 4) Temperature and rainfall are preliminary data.

Monthly Current Report
Rainfall and Accumulative Rainfall
June 2022

Central Thailand

Station	Temperature (°c)		Rainfall (mm)		Accumulative rainfall (mm) Since 1 January	
	Mean	Above or below normal	Actual	Above or below normal	Actual	Above or below normal
Nakhon Sawan	29.2	-0.3	238.0	97.4	600.4	181.7
Bua Chum	29.7	0.5	150.4	26.4	608.5	208.4
Lop Buri	30.0	0.7	42.1	-71.7	271.2	-110.4
Suphan Buri	30.1	0.6	125.1	32.6	483.9	178.6
Thong Pha Phum	27.7	0.4	150.1	-99.5	789.8	167.0
Kanchanaburi	30.1	0.7	139.0	40.1	548.3	178.3
Bangkok Airport	29.7	0.0	173.9	-16.8	776.5	202.9
Bangkok Metropolis	30.1	0.4	231.3	32.8	659.1	54.5
Over the area	29.6	0.4	156.2	5.1 3%	592.2	132.5 29%

Eastern Thailand

Station	Temperature (°c)		Rainfall (mm)		Accumulative rainfall (mm) Since 1 January	
	Mean	Above or below normal	Actual	Above or below normal	Actual	Above or below normal
Prachin Buri	29.8	0.7	118.6	-100.9	529.0	-68.2
Kabin Buri	28.9	0.5	158.4	-21.5	641.4	106.5
Aranyaprathet	30.0	1.1	80.6	-88.0	583.1	85.3
Chon Buri	30.2	0.3	149.0	5.6	583.3	115.8
Ko Sichang	28.7	-0.8	173.9	38.0	485.8	63.1
Pattaya	29.1	0.1	251.0	118.9	512.0	107.4
Sattahip	29.5	0.0	125.1	-31.9	711.4	192.5
Rayong	29.8	0.3	155.2	-22.7	499.2	-85.9
Chanthaburi	28.7	0.5	201.4	-298.3	949.1	-198.6
Khlong Yai	28.6	1.1	315.2	-462.0	1049.6	-616.1
Over the area	29.3	0.3	172.8	-86.3 -33%	654.4	-29.8 -4%

- NOTES :
- 1) Mean temperature is the average of daily dry-bulb temperature
 - 2) "T" is trace, rainfall amount less than 0.1 mm.
 - 3) "blank" is incomplete data.
 - 4) Temperature and rainfall are preliminary data.

Monthly Current Report
Rainfall and Accumulative Rainfall
June 2022

Southern Thailand, east coast

Station	Temperature (°c)		Rainfall (mm)		Accumulative rainfall (mm) Since 1 January	
	Mean	Above or below normal	Actual	Above or below normal	Actual	Above or below normal
Phetchaburi	29.4	0.1	18.6	-68.4	425.9	138.6
Hua Hin	29.4	0.2	35.8	-46.6	577.3	263.6
Prachuap Khiri Khan	29.4	0.8	80.3	-12.5	821.6	414.1
Chumphon	28.6	0.7	111.8	-51.2	1155.5	469.6
Surat Thani	27.7	0.0	114.0	-19.4	944.4	403.4
Ko Samui	29.3	0.5	57.0	-76.6	1212.9	557.9
Nakhon Si Thammarat	28.2	-0.1	157.0	36.6	1766.3	900.9
Songkhla	28.8	0.1	82.9	-19.8	871.5	314.8
Hat Yai Airport	27.5	-0.2	198.0	77.0	917.2	355.9
Pattani Airport	28.2	0.1	76.9	-41.8	850.1	329.8
Narathiwat	28.3	0.3	125.6	-21.6	1347.3	584.3
Over the area	28.6	0.2	96.2	-22.2 -19%	990.0	430.2 77%

Southern Thailand, west coast

Station	Temperature (°c)		Rainfall (mm)		Accumulative rainfall (mm) Since 1 January	
	Mean	Above or below normal	Actual	Above or below normal	Actual	Above or below normal
Ranong	27.7	0.3	364.8	-273.2	1553.4	136.8
Takua Pa	27.3	-0.4	251.9	-204.7	1583.1	221.6
Phuket	28.5	-0.2	239.2	-10.2	895.0	119.0
Phuket Airport	28.3	-0.1	167.8	-146.2	823.2	-127.4
Ko Lanta	28.1	-0.4	224.2	-61.7	801.8	42.7
Trang Airport	27.5	-0.2	369.8	155.1	1139.3	374.4
Satun	27.9	0.0	382.4	192.7	1266.8	420.0
Over the area	27.9	-0.1	285.7	-49.8 -15%	1151.8	169.5 17%

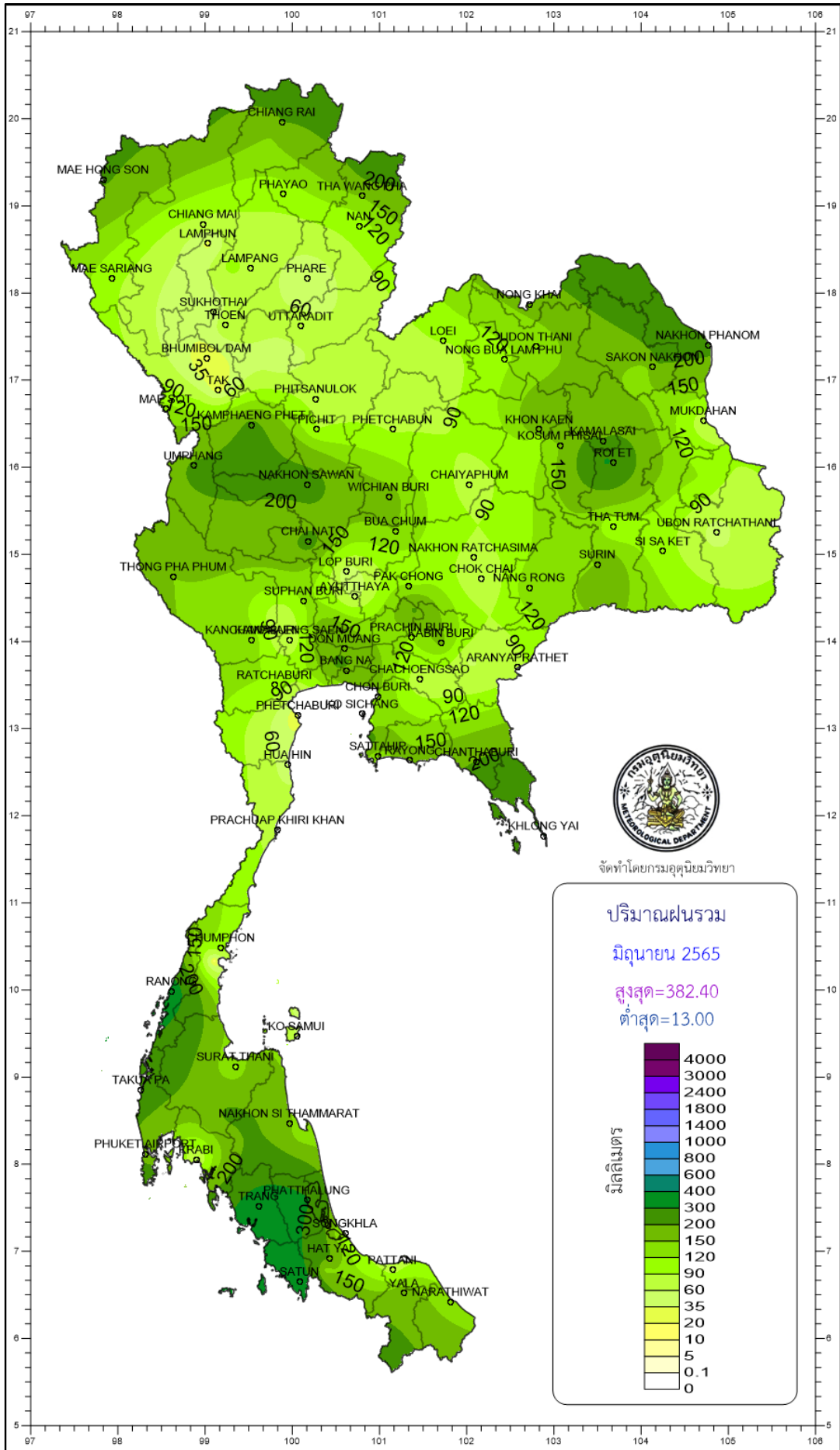
- NOTES :
- 1) Mean temperature is the average of daily dry-bulb temperature
 - 2) "T" is trace, rainfall amount less than 0.1 mm.
 - 3) "blank" is incomplete data.
 - 4) Temperature and rainfall are preliminary data.

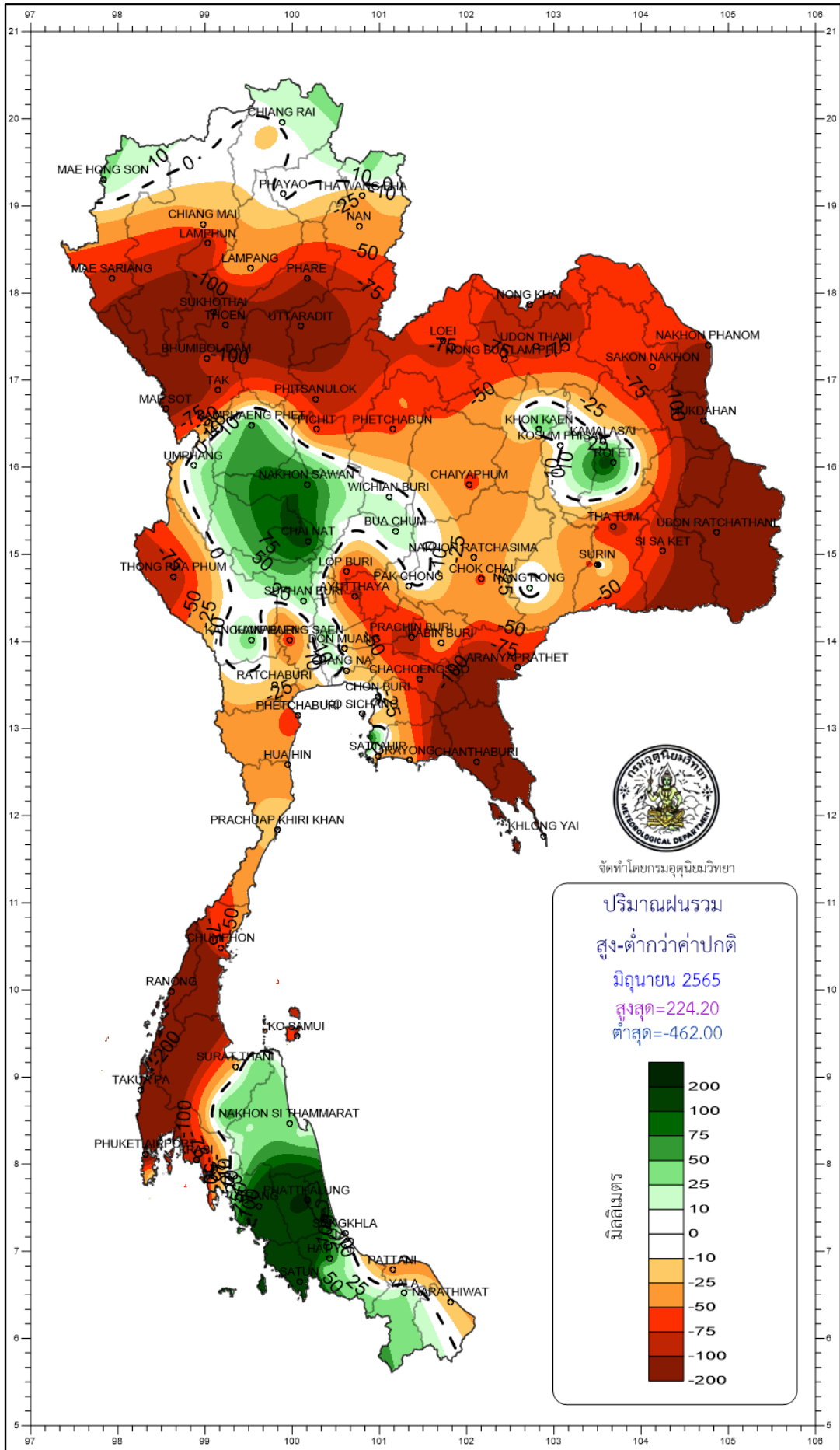
Monthly Current Report

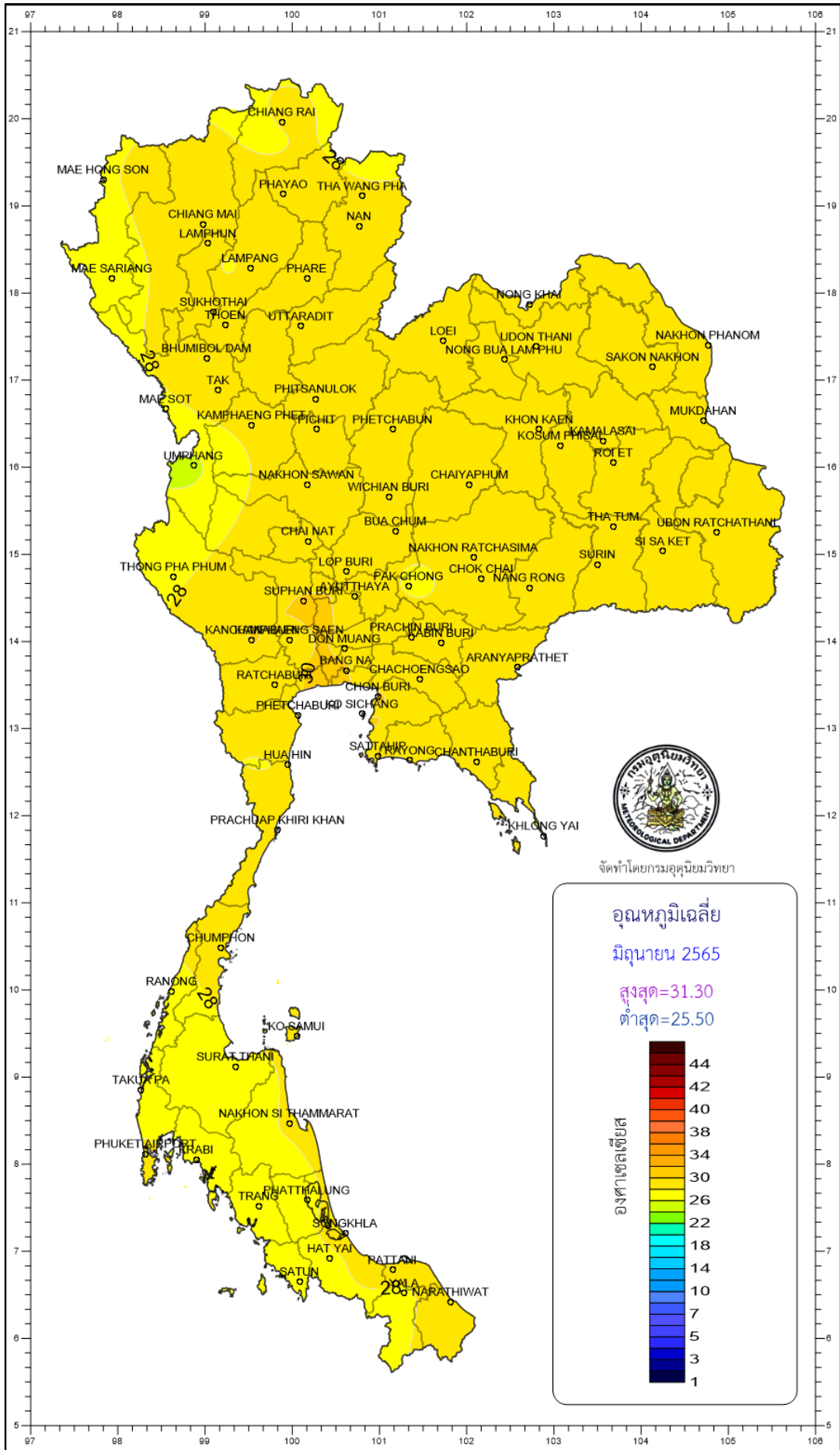
June 2022

Region	Station	Temperature (°c)		Rainfall (mm)		Accumulative rainfall (mm) Since 1 January	
		Mean	Above or below normal	Actual	Above or below normal	Actual	Above or below normal
North	Chiang Rai	28.3	0.8	200.3	14.1	705.2	136.2
	Mae Hong Son	27.9	0.0	207.7	27.6	520.6	76.3
	Phayao	28.6	0.7	104.5	4.1	732.1	314.2
	Chiang Mai	29.0	1.0	81.2	-37.0	781.5	400.2
	Tha Wang Pha	28.9	0.8	151.7	-25.8	801.4	289.4
	Nan	29.4	0.7	110.5	-24.3	604.1	139.3
	Lamphun	29.3	0.8	27.4	-95.6	507.3	136.1
	Lampang	29.0	0.4	79.8	-39.9	424.5	7.5
	Mae Sariang	27.0	-0.1	99.3	-87.6	516.1	96.8
	Phrae	29.0	0.5	39.9	-102.0	479.5	26.8
	Uttaradit	29.8	0.6	69.1	-129.6	479.7	-48.2
	Bhumibol Dam	29.7	1.0	18.4	-90.3	398.7	-11.3
	Tak	29.5	0.7	22.2	-94.2	537.2	157.3
	Mae Sot	27.4	0.6	130.0	-116.8	638.5	166.9
	Umphang	25.5	0.2	204.7	16.7	774.6	231.9
	Phitsanulok	29.2	-0.1	79.2	-81.9	552.4	114.0
	Lom Sak	28.9	0.4	79.2	-48.5	258.1	-131.6
	Phetchabun	29.3	0.6	87.2	-54.0	358.7	-103.5
	Wichian Buri	29.2	-0.1	163.0	11.3	714.8	252.2
	Kamphaeng Phet	28.6	-0.1	219.1	61.9	869.1	406.1
Northeast	Nong Khai	29.2	0.6	164.5	-88.2	923.2	281.8
	Loei	28.4	0.3	101.6	-62.4	503.3	-5.3
	Udon Thani	29.1	0.3	124.7	-93.8	482.4	-75.2
	Nakhon Phanom	28.7	0.6	223.8	-173.2	679.9	-168.7
	Sakon Nakhon	28.9	0.5	196.2	-65.9	580.5	-96.2
	Mukdahan	29.7	1.0	71.8	-133.0	450.2	-88.8
	Khon Kaen	29.3	0.5	201.6	55.9	569.8	113.2
	Kosum Phisai	30.0	0.7	151.9	-3.1	610.8	114.9
	Roi Et	29.7	0.6	266.2	76.5	737.2	225.6
	Chaiyaphum	29.3	0.5	79.1	-54.1	402.1	-34.9
	Ubon Ratchathani	29.8	1.1	46.0	-190.9	643.2	57.7
	Tha Tum	29.1	-0.1	91.4	-90.0	321.6	-173.9
	Surin	29.5	0.9	200.6	6.5	873.6	343.5
	Nakhon Ratchasima	29.6	0.3	83.7	-36.3	507.7	88.9
Chok Chai	29.4	0.5	55.2	-55.7	403.4	10.9	
Nang Rong	28.8	0.1	141.8	14.4	792.2	337.4	
Central	Nakhon Sawan	29.2	-0.3	238.0	97.4	600.4	181.7
	Bua Chum	29.7	0.5	150.4	26.4	608.5	208.4
	Lop Buri	30.0	0.7	42.1	-71.7	271.2	-110.4
	Suphan Buri	30.1	0.6	125.1	32.6	483.9	178.6
	Thong Pha Phum	27.7	0.4	150.1	-99.5	789.8	167.0
	Kanchanaburi	30.1	0.7	139.0	40.1	548.3	178.3
	Bangkok Airport	29.7	0.0	173.9	-16.8	776.5	202.9
	Bangkok Metropolis	30.1	0.4	231.3	32.8	659.1	54.5
East	Prachin Buri	29.8	0.7	118.6	-100.9	529.0	-68.2
	Kabin Buri	28.9	0.5	158.4	-21.5	641.4	106.5
	Aranyaprathet	30.0	1.1	80.6	-88.0	583.1	85.3
	Chon Buri	30.2	0.3	149.0	5.6	583.3	115.8
	Ko Sichang	28.7	-0.8	173.9	38.0	485.8	63.1
	Pattaya	29.1	0.1	251.0	118.9	512.0	107.4
	Sattahip	29.5	0.0	125.1	-31.9	711.4	192.5
	Rayong	29.8	0.3	155.2	-22.7	499.2	-85.9
	Chanthaburi	28.7	0.5	201.4	-298.3	949.1	-198.6
Khlung Yai	28.6	1.1	315.2	-462.0	1049.6	-616.1	
South (East Coast)	Phetchaburi	29.4	0.1	18.6	-68.4	425.9	138.6
	Hua Hin	29.4	0.2	35.8	-46.6	577.3	263.6
	Prachuap Khiri Khan	29.4	0.8	80.3	-12.5	821.6	414.1
	Chumphon	28.6	0.7	111.8	-51.2	1155.5	469.6
	Surat Thani	27.7	0.0	114.0	-19.4	944.4	403.4
	Ko Samui	29.3	0.5	57.0	-76.6	1212.9	557.9
	Nakhon Si Thammarat	28.2	-0.1	157.0	36.6	1766.3	900.9
	Songkhla	28.8	0.1	82.9	-19.8	871.5	314.8
	Hat Yai Airport	27.5	-0.2	198.0	77.0	917.2	355.9
	Pattani Airport	28.2	0.1	76.9	-41.8	850.1	329.8
Narathiwat	28.3	0.3	125.6	-21.6	1347.3	584.3	
South (West Coast)	Ranong	27.7	0.3	364.8	-273.2	1553.4	136.8
	Takua Pa	27.3	-0.4	251.9	-204.7	1583.1	221.6
	Phuket	28.5	-0.2	239.2	-10.2	895.0	119.0
	Phuket Airport	28.3	-0.1	167.8	-146.2	823.2	-127.4
	Ko Lanta	28.1	-0.4	224.2	-61.7	801.8	42.7
	Trang Airport	27.5	-0.2	369.8	155.1	1139.3	374.4
	Satun	27.9	0.0	382.4	192.7	1266.8	420.0
	Over the area	28.9	0.3	144.6	-44.4	713.5	142.6
					-23%		25%

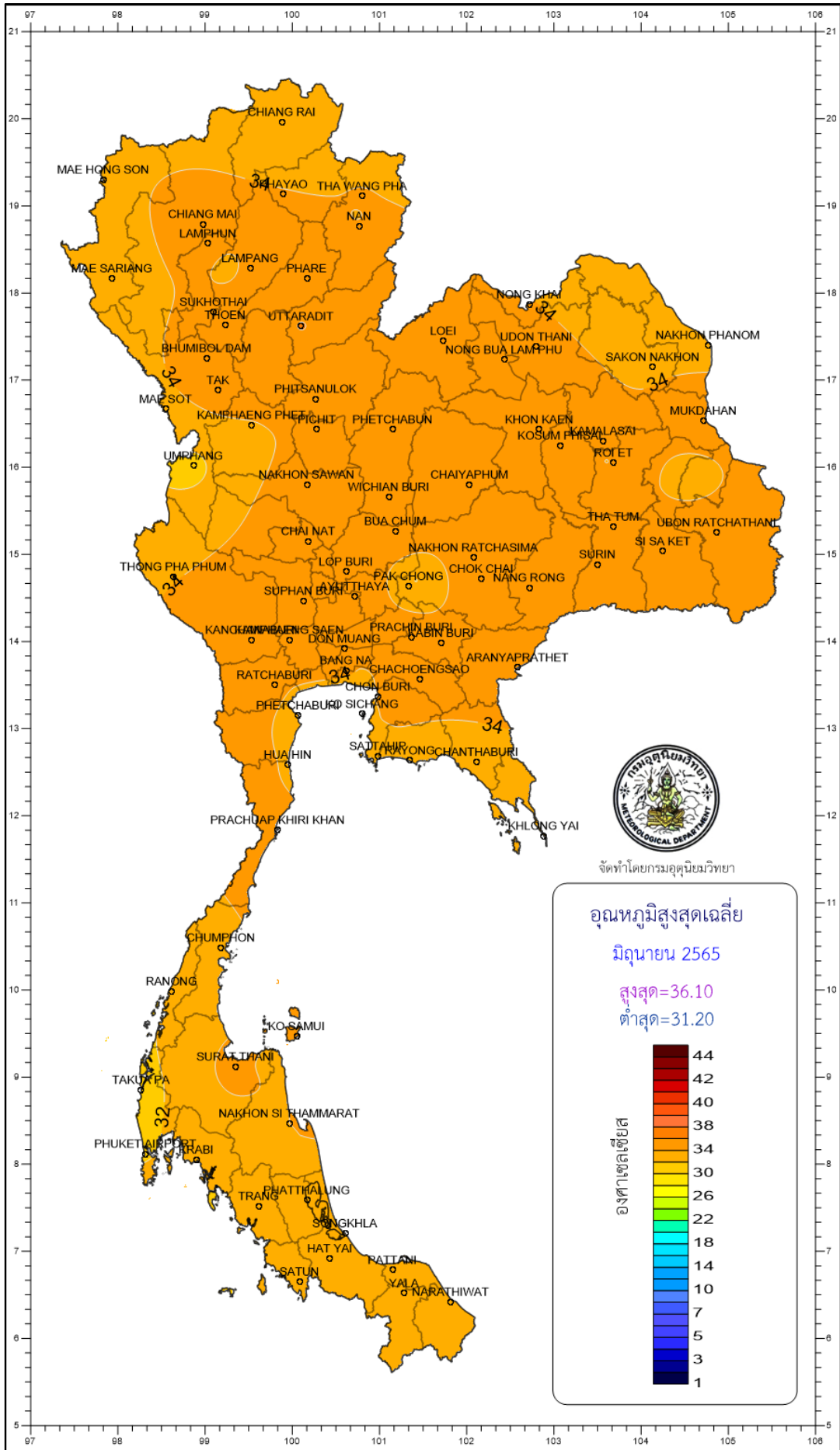
- NOTES :
- 1) Mean temperature is the average of daily dry-bulb temperature
 - 2) "T" is trace, rainfall amount less than 0.1 mm.
 - 3) "blank" is incomplete data.
 - 4) Temperature and rainfall are preliminary data.



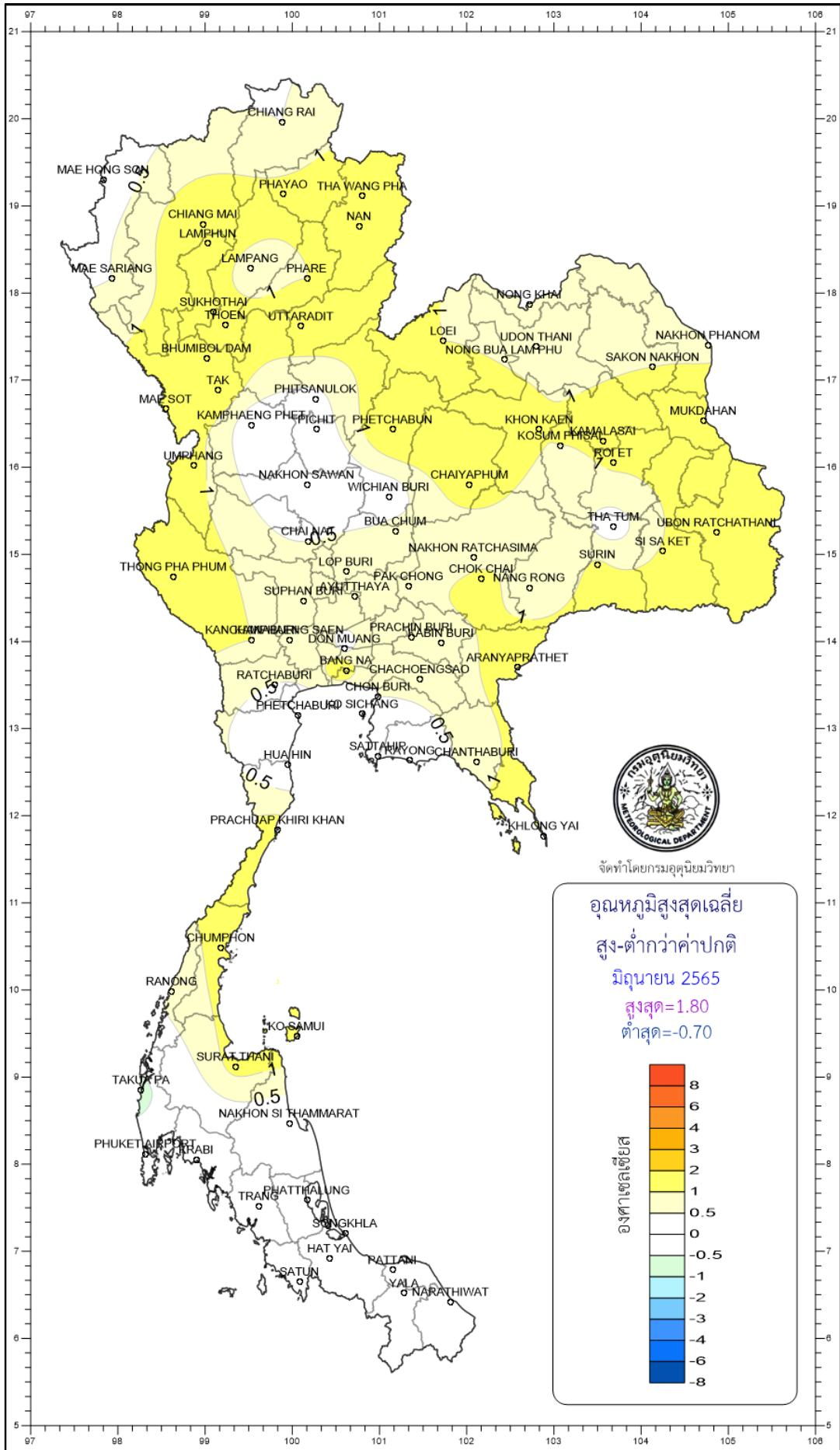




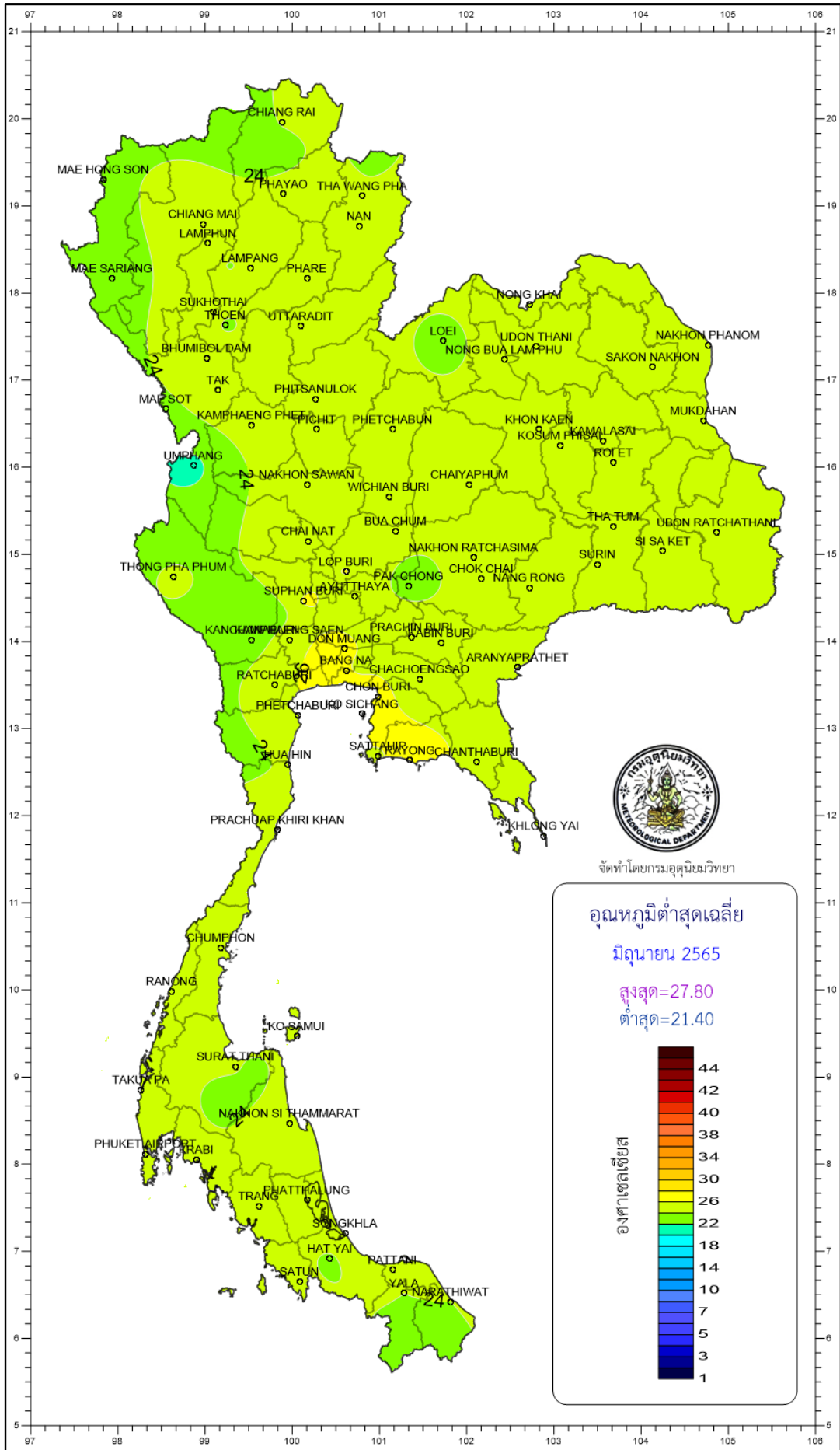
จัดทำโดยกรมอุตุนิยมวิทยา



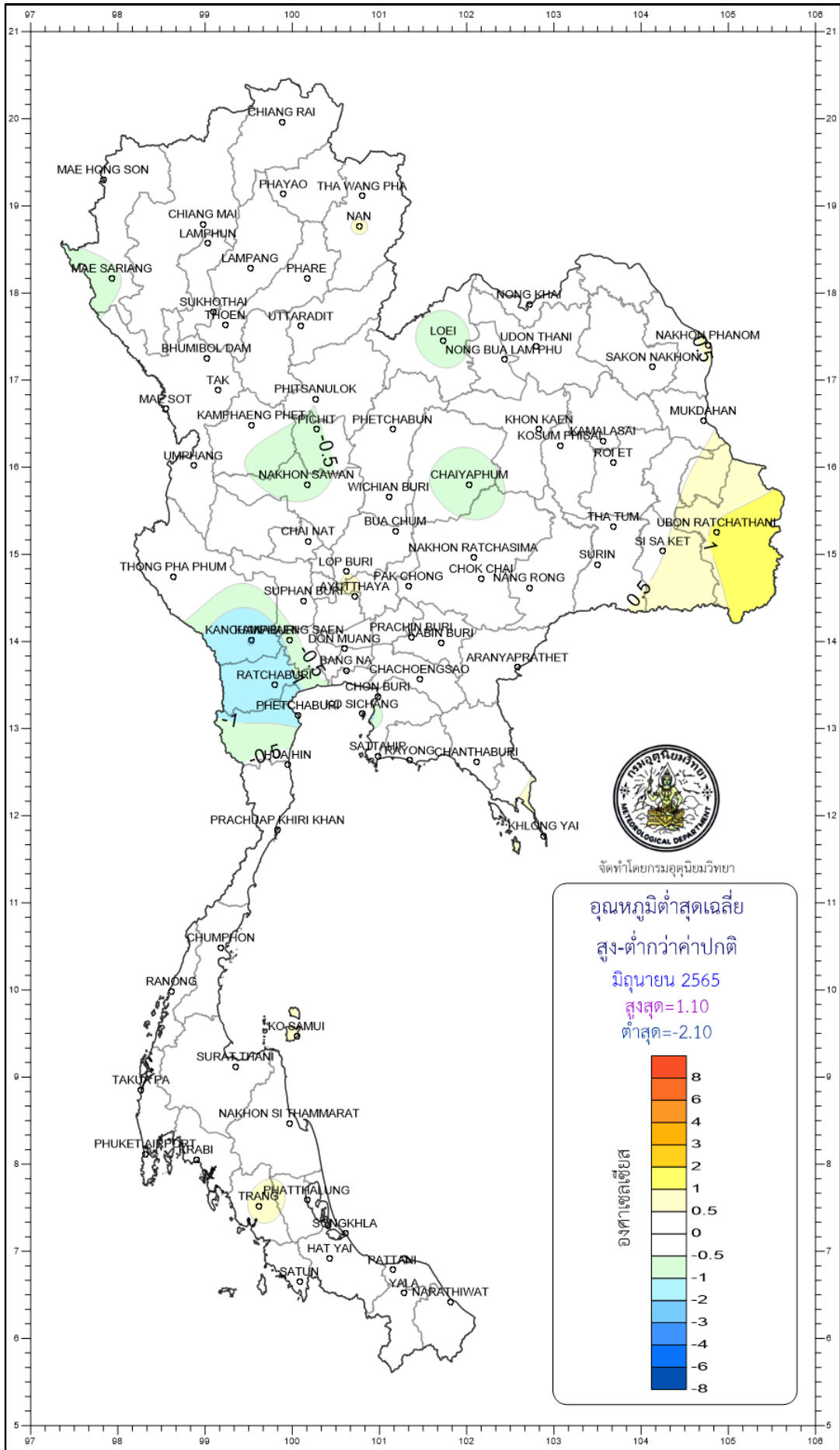
CHIANG RAI
MAE HONG SON
CHIANG MAI
LAMPHUN
MAE SARIANG
LAMPANG
PHARE
SUKHOTHAI
PHOEN
UTTARADIT
BHUMIBOL DAM
TAK
PHITSANULOK
MAE SOT
KAMPHAENG PHET
PHETCHABUN
UMPHANG
NAKHON SAWAN
WICHIAN BURI
CHAIYAPHUM
CHAI NAT
BUA CHUM
THONG PHA PHUM
LOP BURI
SOPHAN BURI
AYUTTHAYA
KANG KHROANG
SAEN
DON MUANG
PRACHIN BURI
YABIN BURI
RATCHABURI
BANG NA
CHACHOENGSAO
CHON BURI
PHETCHABURI
SICHANG
HUAHIN
SAITAHIR
KAYONG
CHANTHABURI
PRACHUAP KHIRI KHAN
KHLONG YAI
CHUMPHON
RANONG
KO SAMUI
SURATTHANI
TAKU PA
NAKHON SI THAMMARAT
PHUKET AIRPORT
PHUKET THANI
PHATTHALUNG
TRANG
SONGKHLA
HAT YAI
SATUN
RATTANI
YALA
NARATHIWAT



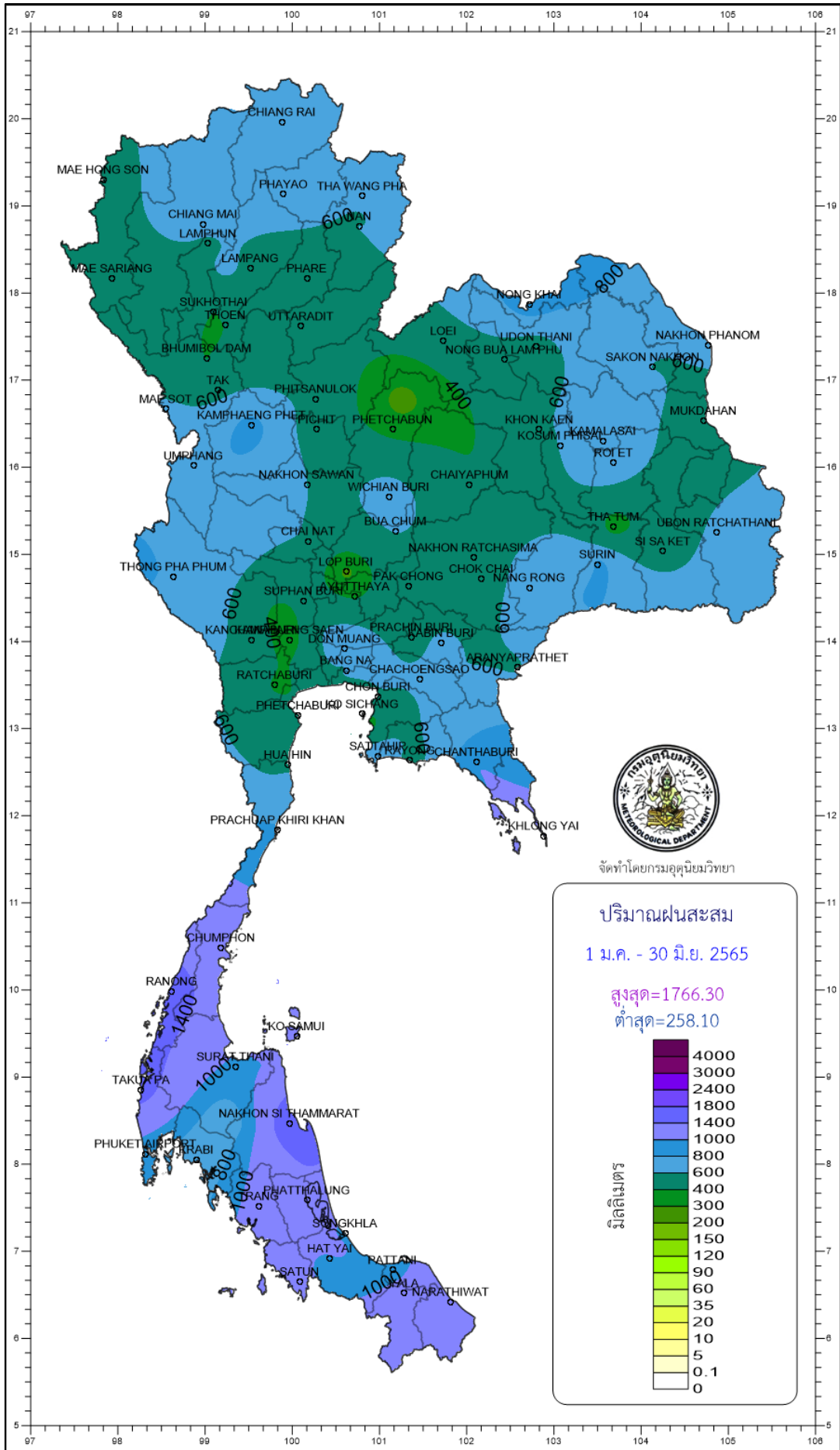
CHIANG RAI
MAE HONG SON
MAE SARIANG
CHIANG MAI
LAMPHUN
LAMPANG
PHAYAO
THA WANG PHA
NAN
PHARE
SUKHOTHAI
PHOEN
UTTARADIT
BHUMIBOL DAM
TAK
PHITSANULOK
KAMPHAENG PHET
CHIT
PHETCHABUN
NONG KHAI
LOEI
UDON THANI
NONG BUA LAMPHU
NAKHON PHANOM
SAKON NAKHON
MUKDAHAN
KHAMMASAI
KOSUM PHIT
ROLET
UMPHANG
NAKHON SAWAN
WICHIAN BURI
CHAIYAPHUM
THA TUM
UBON RATCHATHANI
SI SA KET
SURIN
CHAI NAT
BUA CHUM
NAKHON RATCHASIMA
THONG PHA PHUM
LOP BURI
PAK CHONG
CHOK CHAI
NANG RONG
SOPHAN BURI
AYUTTHAYA
KANCHANABURI
SAEN
DON MUANG
PRACHIN BURI
SARIN BURI
RATCHABURI
BANG NA
CHACHOENGSAO
ARANYAPRATHET
CHON BURI
DHET HABUR
SICHANG
HUAHIN
SATTAKHONG
CHANTHABURI
PRACHUAP KHIRI KHAN
KHLONG YAI
CHUMPHON
RANONG
KO SAMUI
SURAT THANI
TAKU PA
NAKHON SI THAMMARAT
PHUKET AIRPORT
PHUKET THANI
PHATTALUNG
TRANG
SONGKHLA
HAT YAI
SATUN
RATTANI
YALA
NARATHIWAT

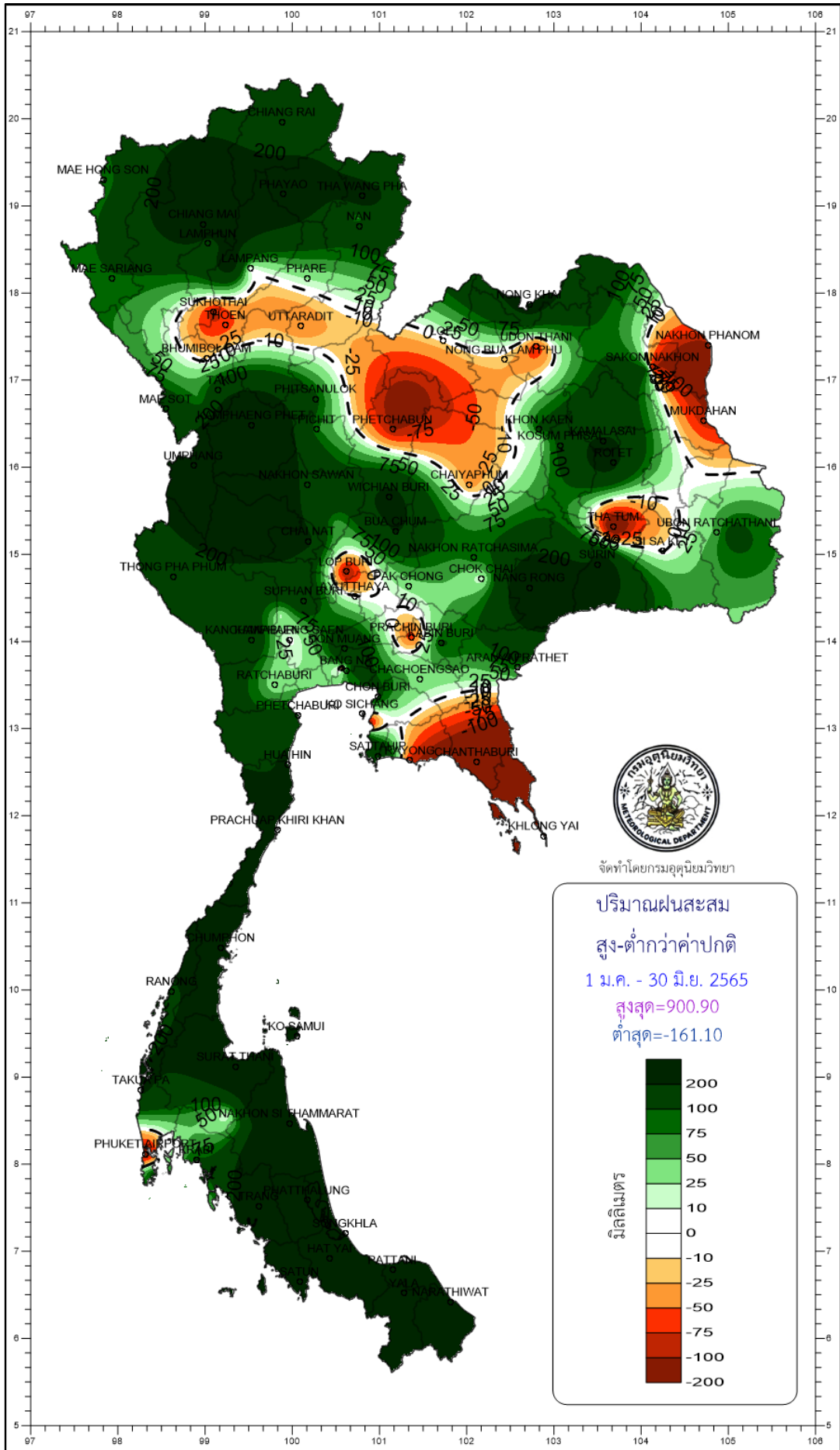


จัดทำโดยกรมอุตุนิยมวิทยา



จัดทำโดยกรมอุตุนิยมวิทยา





จัดทำโดยกรมอุตุนิยมวิทยา